



ADVANCED  
VETERINARY  
ULTRASOUND

A DIVISION OF ADVANCED ULTRASOUND SYSTEMS



## PORTABLE ULTRASOUND SCANNERS

FOR SMALL AND LARGE ANIMALS COMPREHENSIVE DIAGNOSTICS

[www.draminski.com](http://www.draminski.com)



# ABOUT US

Draminski S.A. is a Polish manufacturer and global distributor of veterinary ultrasound machines.

The company creates imaging technology that improves workflow of veterinarians in the demanding environment of a farm and assures the animal well-being.

The innovative solutions are intended to change the way veterinarians and farmers approach animal reproduction and health diagnostics. We take proud not only in providing quality devices but also in continuous after-sales support of our valued customers.

## BLUE

QUICK • EASY  
ACCURATE

A premium class portable ultrasound scanner for quick, precise and comprehensive health diagnosis in small animals and horses. Intuitive menu, crystal clear touch screen and user friendly interface create a great tool for high quality imaging both in clinic and field environment.

### TECHNOLOGIES OF THE FUTURE:



for linear probes it allows a wider field of view, for microconvex probes it improves heart examination



Contrast, sharpness and tissue imaging enhancement system.



Grayscale curve perfectly matched to the perception of the human eye.



• Probes 1 2 3 4 5 6 7 8



- Probes 1 2 3 4 5 6 7 8

## ELEGANCE, SIMPLICITY AND USEFULNESS

Clear image no matter where you are thanks to the contrasting and bright screen. Color Doppler will help you to show the beating heart of the fetus. The sensitive touch screen will speed up setting up the correct image. Ready to use in 24 seconds!

## 4Vet Slim

- Weight: 3.58 kg with battery
- Responsive and precise touch panel
- Up to 4 hours of continuous work on a full charge.



- Probes 1 2 3 4 5 6 7 8

## COMPREHENSIVE DIAGNOSTICS

iScan2 MULTI is a multi-task field ultrasound scanner with interchangeable probes for comprehensive diagnostics of farm animals.

## iScan 2 MULTI

- Weight: 2.06 kg with battery
- A wide selection of probes
- Up to 7 hours of continuous work on a full charge.



- Probes 3 5

## EXTREMELY RESISTANT TO DUST AND WATER

Lightweight ultrasound scanner with an efficient battery and a large display. Thanks to advanced technology, iScan 2 is a precision in farm animal diagnostics! The device is available in two versions – with a convex rectal probe or a linear rectal probe.

## iScan 2

- Weight: 2.40 kg with probe & battery
- High class of resistance to dust and water (IP65)
- Up to 7 hours of continuous work on a full charge.



- Probes 5

## EXPECT MORE. USE MINI.

It is an indispensable tool in the work of every veterinarian dealing with the reproduction of farm animals. Lightweight and handy, it was designed to make your work easier.

## iScan mini

- Weight: 1,35 kg
- Not much bigger than a hand
- Continuous operation time on a full charge up to 3h 40 min.

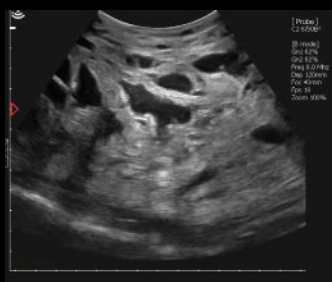
## PROBES

### Convex abdominal

1



- 2.0 – 8.0 MHz (5.0 MHz)
- R50
- 60 – 300 mm



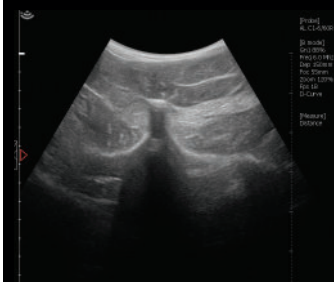
Udder of a cow

### Convex abdominal

2



- 2.0 – 5.0 MHz (3.5 MHz)
- R60
- 60 – 350 mm



The horse's musculoskeletal system

### Convex rectal

3



- 3.0 – 7.5 MHz (5.0 MHz)
- R60
- 60 – 250 mm



Cow pregnancy

### Microconvex rectal P-probe

4



- 4.0 – 9.0 MHz (5.0 MHz)
- R20
- 60 – 300 mm



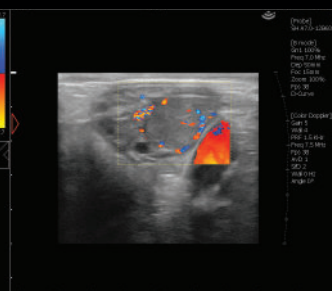
The horse's musculoskeletal system

### Linear rectal

5



- 4.0 – 9.0 MHz (7.0 MHz)
- L60
- 40 – 120 mm



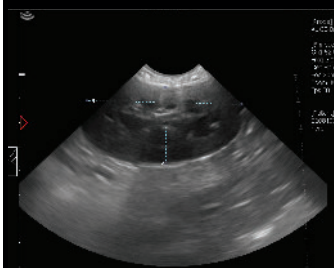
Blood flow in corpus luteum

### Microconvex abdominal

6



- 4.0 – 9.0 MHz (6.5 MHz)
- R15
- 40 – 150 mm



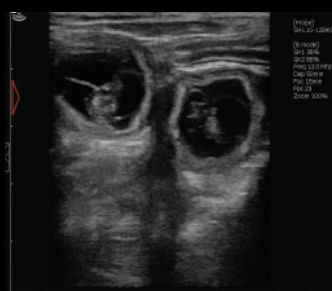
Dog kidney

### Linear abdominal

7



- 6.0 – 14.0 MHz (10.0 MHz)
- L40
- 40 – 100 mm



Cat pregnancy

### Microconvex abdominal

8



- OPU probe
- 4.0 – 9.0 MHz (6.5 MHz)
- R11
- 40 – 150 mm



Cow ovary - OPU

## Tall & tendon stands



Perfect to move safely around your clinic or stable. Specially designed for tendon examinations



## Gel Stand-Offs

Enables examination of tendons with the use of a linear probe



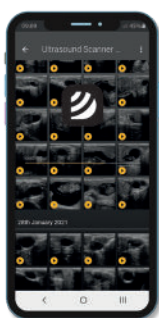
## Sun protection shields

Facilitates work in strong lighting



## Android application

Enables you to share diagnostic images with other users and share them on Social Media



**DRAMIŃSKI**  
CARE AND SHARE **app**

## The OPU system

A high frequency microconvex probe hidden in a compact and ergonomic handle will guarantee high performance during the Ovum Pick-Up procedure. The needle path indicator increases the precision of the aspiration procedure



• Probes **8**

## WiFi antennas



Compatible with:

iScan 2  
iScan 2 MULTI



Compatible with:

BLUE  
4VetSlim

## Goggles

Perfect for rectal examination



## Carry straps and belt

Improve the comfort of work through better weight distribution of the device





*A DIVISION OF ADVANCED ULTRASOUND SYSTEMS*

Advanced Veterinary Ultrasound  
9522 E. 47th Place, Suite C, Tulsa, Oklahoma 74145

 (866)620-2831       [systems@advancedultrasound.com](mailto:systems@advancedultrasound.com)

[www.advancedultrasound.com](http://www.advancedultrasound.com)